

CSU

ONLINE
COURSE
SERVICES

Account

Dashboard

Courses


Calendar

Inbox

History

Help

←



Account

Dashboard

Courses

Calendar

Inbox

History

Commons

Follett Discover

Help

←

[Discussions](#)

[Assignments](#)

[Grades](#)

[People](#)

[Quizzes](#)

[Attendance](#)

[Course Ratings](#)

Pages

[Panopto Video](#)

[Files](#)

[Google Drive](#)

[Collaborations](#)

[Accessibility report](#)

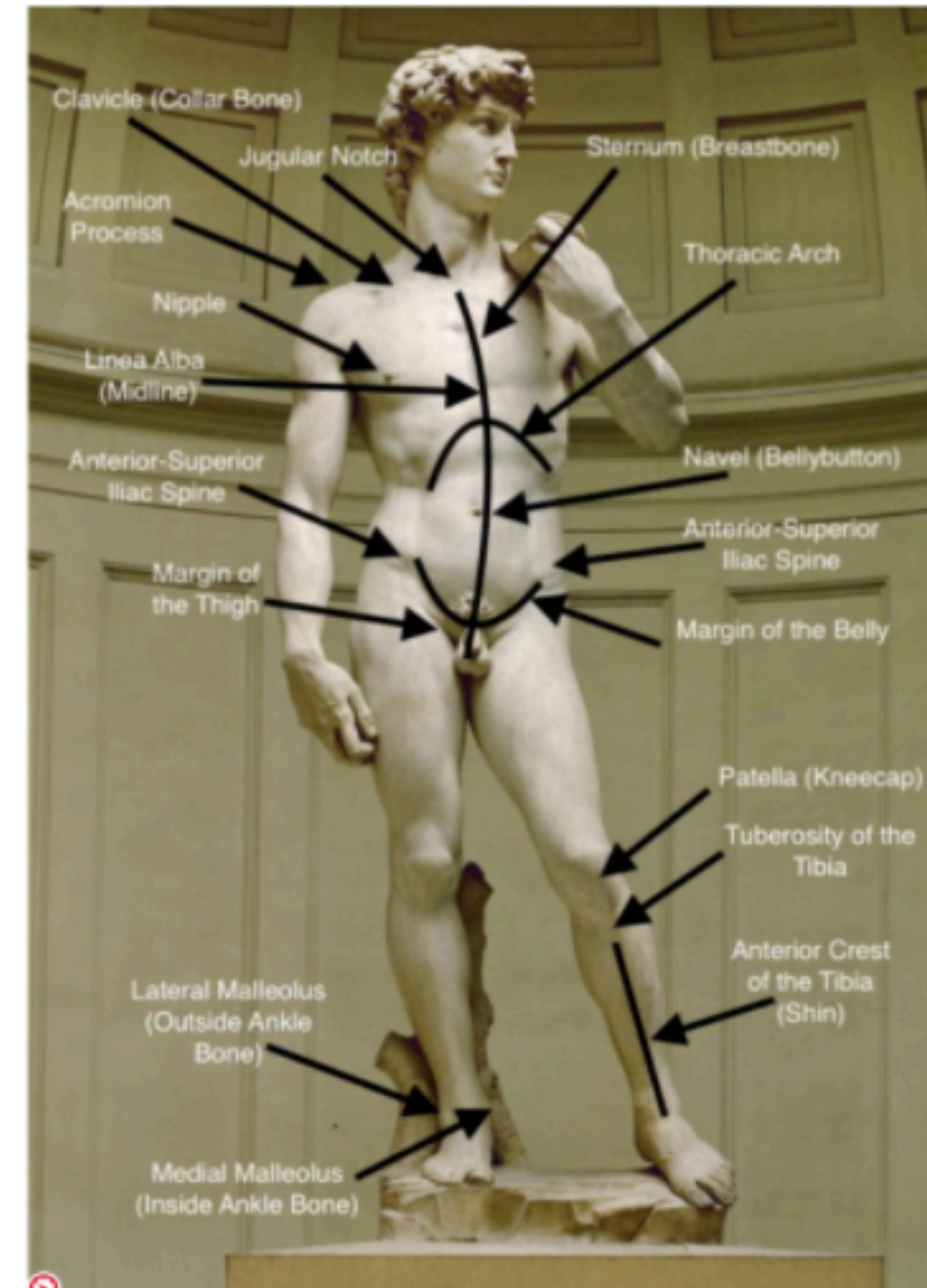
[Outcomes](#)

[Rubrics](#)

[BigBlueButton \(Formerly Conferences\)](#)

[Settings](#)

The Surface Landmarks of the Anterior View Are:



alex-ghizila-lbCc....jpg

Facilitating-Brea....pdf

Show All

×

Updated Activity: I plan to use Jamboard in combination with Break Out Rooms in Zoom as a way for students to practice identifying the surface landmarks in a peer-to-peer manner and then sharing their findings in a collaborative, synchronous group discussion. For the activity I plan to ask students to watch a brief video lecture or give them a reading on the subject to prepare for the activity. Then I will send them to break out rooms where they can find the surface landmarks together and add them to the image on Jamboard. I may give different groups a different image in the same pose or even a different pose. I will visit the rooms to see how the groups are doing, and then we will meet back to discuss each group's findings. Here is an example of how I would start the Jamboard Exercise:

Updated Activity: I plan to use Jamboard in combination with Break Out Rooms in Zoom as a way for students to practice identifying the surface landmarks in a peer-to-peer manner and then sharing their findings in a collaborative, synchronous group discussion. For the activity I plan to ask students to watch a brief video lecture or give them a reading on the subject to prepare for the activity. Then I will send them to break out rooms where they can find the surface landmarks together and add them to the image on Jamboard. I may give different groups a different image in the same pose or even a different pose. I will visit the rooms to see how the groups are doing, and then we will meet back to discuss each group's findings. Here is an example of how I would start the Jamboard Exercise:

Surface Landmarks

Set background Clear frame

Breakout Room Activity:
Find 10 Surface Landmarks in Michelangelo's David. Use the drawing tool for arrows and the text tool for labels!

The Surface Landmarks are places in the figure where the bones of the skeleton come close to the surface, or where fleshy tissue may mark the center or edge of a form.

Artists use surface landmarks to find the gesture, to locate the major masses, to measure proportions, and to compare symmetrical parts to one another and to the space.

Extra Credit:
Can you name the pose?

Jugular Notch

CSU

ONLINE
COURSE
SERVICES

Account

Dashboard

Courses

Calendar

Inbox

History

Help

I plan to repeat the exercise using drawings and/or hi-res photos of a variety of figures so that students can practice locating the surface landmarks on different body types, like this (note: I use images from a photographic database called Croquis Cafe with permissions to share for educational purposes):

Surface Landmarks

2/3

Set background Clear frame

Breakout Room Activity 2:
Find 10 Surface Landmarks in this photo
of the model. Use the drawing tool for
arrows and the text tool for labels!

Hint: Include
side-to-side,
symmetrical
comparison
points!

Extra Credit: Can
you locate the
weight-bearing leg
and explain your
reasoning?

I believe that these activities will help tremendously with student engagement, but also in understanding and retention of the information. Practicing with peers will strengthen a sense of community and encourage the more shy students to participate.

Reply