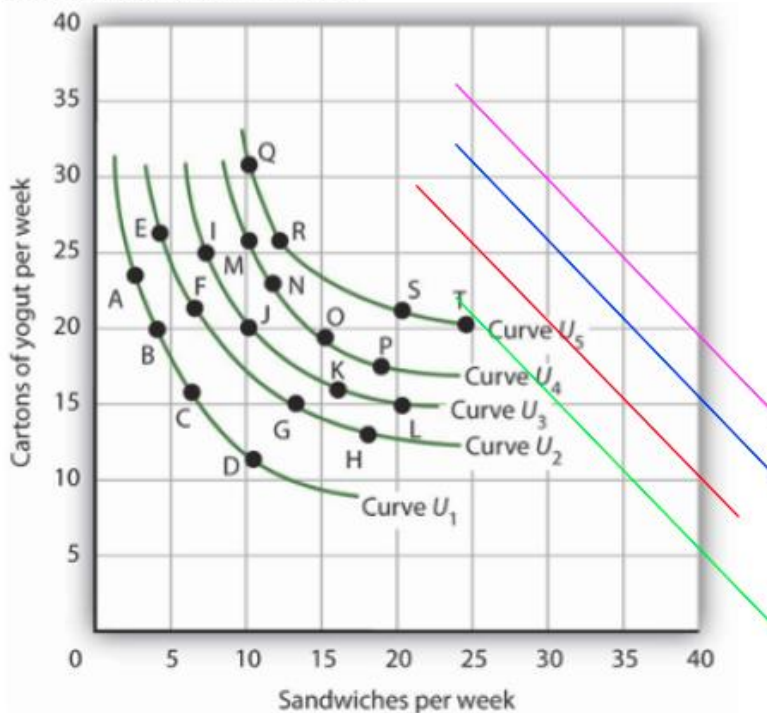


Improvement Share

Students often come to online office hours to review methods covered as a team in Google Doc-based guided inquiry exercise. In the office hour I can review the concepts but students don't get to practice during the office hours. The creation of a Jamboard recreates some of the key parts of the guided inquiry exercise and allows students work on the same Jamboard so that office hours become more dynamic and get closer to the feel of a "face-to-face" environment.

Google Doc example (asynchronous online)

Model 2: Graph of the Indifference Curves



Note on editing the lines in the graph above:

- Click on the graph above and you will see the blue lines with blue boxes surrounding the graph.
- Click on "Edit" in the box below the graph.
- Select one line so that the line runs from one corner of the box the opposite corner of the box.
- Click and hold one end of the line and drag it to the desired intercept point and then release.
- Do the same with the other end of the same line.
- [Repeat for the other two lines.]
- Click on "Save and Close".

Jamboard Recreation (synchronous online)

Q3 Utility Max st Budget Practice_Master

1/1

Share

Set background Clear frame

- The budget is \$450.
- Draw a budget line for a yogurt price of \$15 and a sandwich price of \$11.25.
- Draw a budget line for a yogurt price of \$15 and a sandwich price of \$15.
- Draw a budget line for a yogurt price of \$15 and a sandwich price of \$45.
- Edit a sticky note for each tangent point and use the coordinates in the total expenditure equation to check that it satisfies the budget. Use a scrap sheet of paper and a calculator as you do this.

Feel free to ask questions by adding a new sticky note.

Curve U_3
Curve U_2
Curve U_1

Cartons of yogurt per week

Sandwiches per week

Y*Py + S*Ps = B

Y*Py + S*Ps = B

Y*Py + S*Ps = B

Hints:
 Figure out the intercepts first and then draw the line. Look for the tangencies (not intersections).
 To draw a straight line, choose the pen and then hold down the shift key as you draw.